

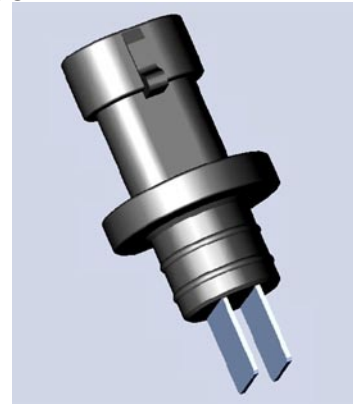


Casco Products Corporation  
 A Subsidiary of Sequa Corporation  
 39500 High Pointe Blvd., Suite 180  
 Novi, MI 48375  
 248 - 348-1260  
 Main Fax: 248 - 348-8086  
[www.cascopeproducts.com](http://www.cascopeproducts.com)

## Washer Fluid Level Sensor

The **CASCO** Windshield Washer Fluid Level Sensor provides a simplified solution for single-point fluid level measurement. Based on proven technology from Casco's Coolant Level Sensor designs, the sensor indicates single-point level via conductivity of the washer fluid. An optional parallel resistor is included to verify correct electrical installation.

- ✓ No moving parts (as with float-type designs)
- ✓ Press-in packaging
- ✓ Hermetically sealed
- ✓ Cost efficient, simplified design
- ✓ Optional parallel diagnostic resistor



Electrical	
Typical implementation	pin 2 GND, pin 1 to Vcc through pull-up resistor
Minimum voltage drops (fluid vs no fluid)	60%
Washer fluid alcohol concentration	Tap water to highest recommended alcohol/water ratio
Environmental	
Storage temperature	-40°C to 120°C
Operating Temperature	-40°C to 85°C
Fluid compatibility	Resistant to under-hood fluids & vapors
Corrosion / Humidity	ASTM-B117-85



Casco Products Corporation is a global Tier One electronics supplier with facilities in the US, Brazil, Canada, China, Germany, Italy and Tunisia.  
 Contact: Jennifer Baumgartner at (248) 348-1260